

## GW316-CCSK Countersunk Closed End Threaded Insert

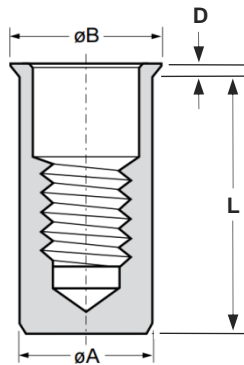
Stainless steel 316 · Countersunk · Round · Closed end  
M4 - M10

### Features

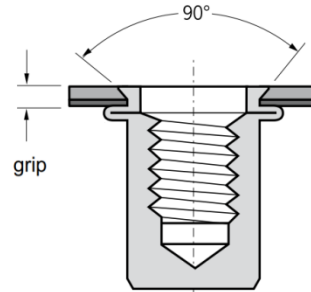
- Designed to provide load bearing threads in thin sheet materials
- Countersunk head flush installation and clamp up
- Closed end prevents the ingress of dirt and fluids into thread and electrical circuits
- Extra high corrosion resistance

### Material

- Stainless steel 316



Before Placement



After Placement

Part No.	Thread Size	Grip Range		Hole Size	$\phi A$	$\phi B$	D	L
		min.	max.					
GW316-CCSKM4-1230	M4	1.2	3.0	6.0	6.0	8.0	1.0	16.0
GW316-CCSKM5-1235	M5	1.2	3.5	7.0	7.0	9.0	1.0	18.0
GW316-CCSKM6-1745	M6	1.7	4.5	9.0	9.0	12.0	1.5	24.0
GW316-CCSKM8-1745	M8	1.7	4.5	11.0	11.0	14.0	1.5	25.0
GW316-CCSKM8-4565		4.5	6.5					27.0
GW316-CCSKM10-1745	M10	1.7	4.5	13.0	13.0	16.0	1.5	30.5

Thread Size	Max. torque	Pull-out	Torque-to-turn	Shear strength
	Nm max.	Kn	Nm	kN
M4	~7.1	> ~11.0	~2.6	~3.5
M5	> ~16.0	> ~14.5	~3.0	~4.8
M6	> ~22.0	> ~27.0	~6.8	~7.3
M8	> ~70.0	> ~40.0	~9.0	~9.0
M10	> ~70.0	> ~43.0	~13.0	~8.4



### Can't find what you are looking for?

We can provide unique and customized solutions.  
Contact your nearest [Gripwell](#) team for assistance!